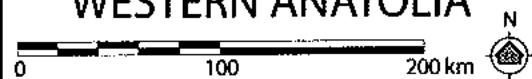
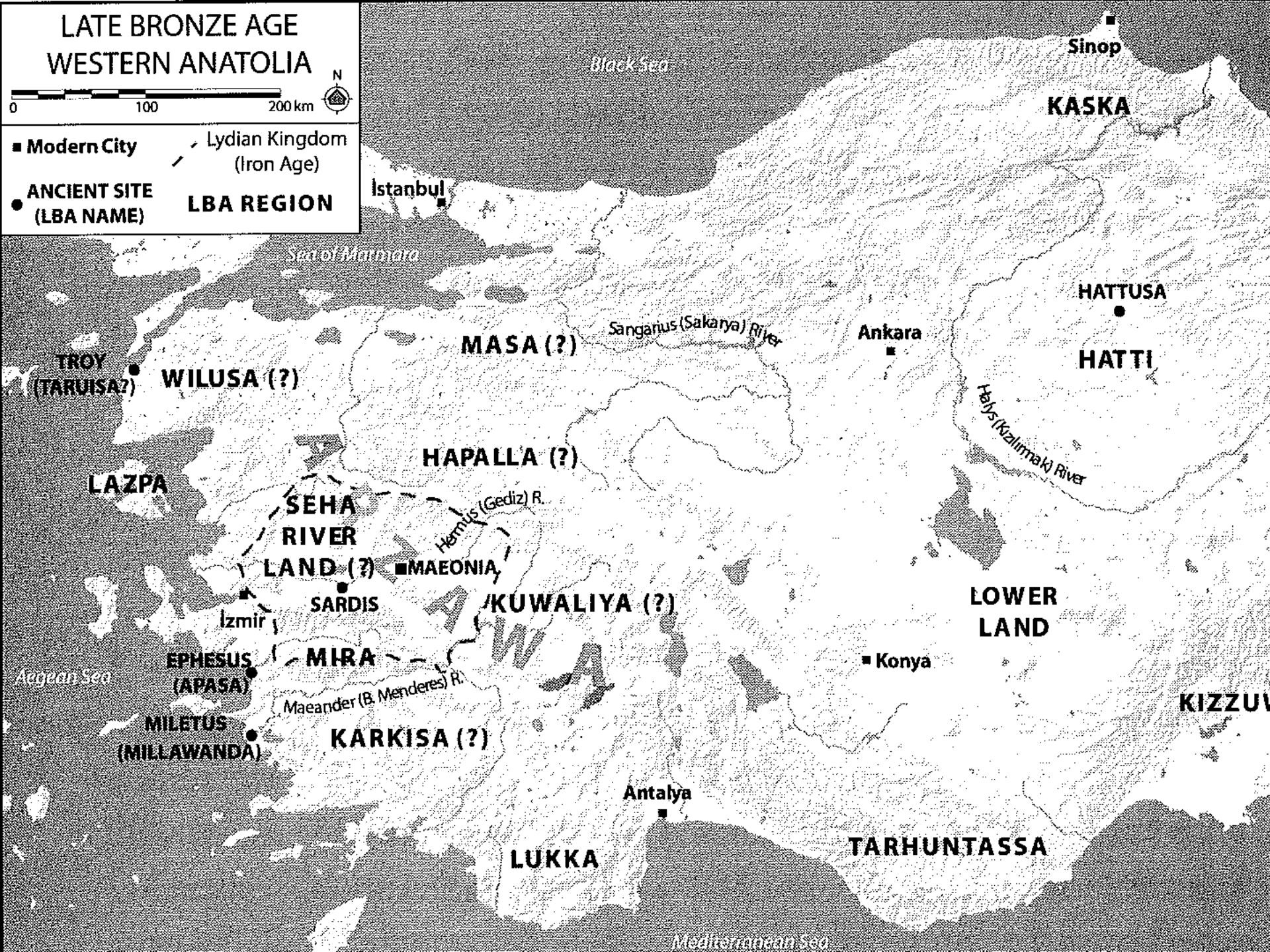
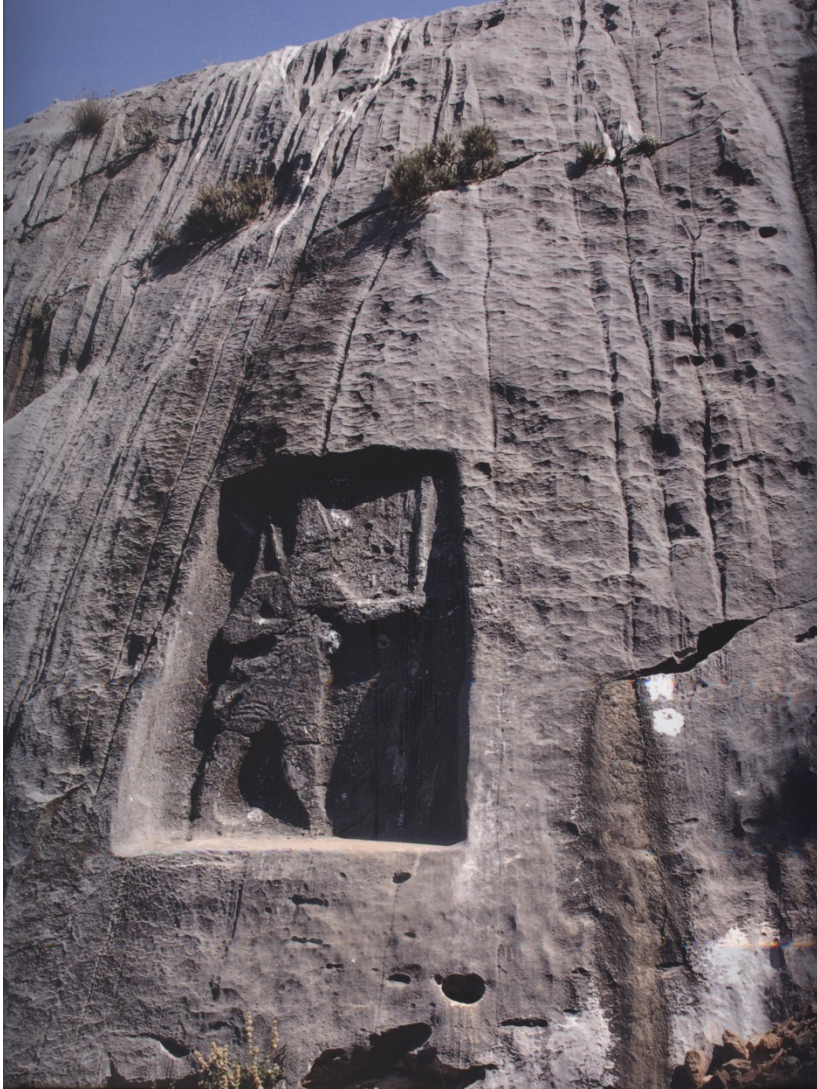


LATE BRONZE AGE WESTERN ANATOLIA



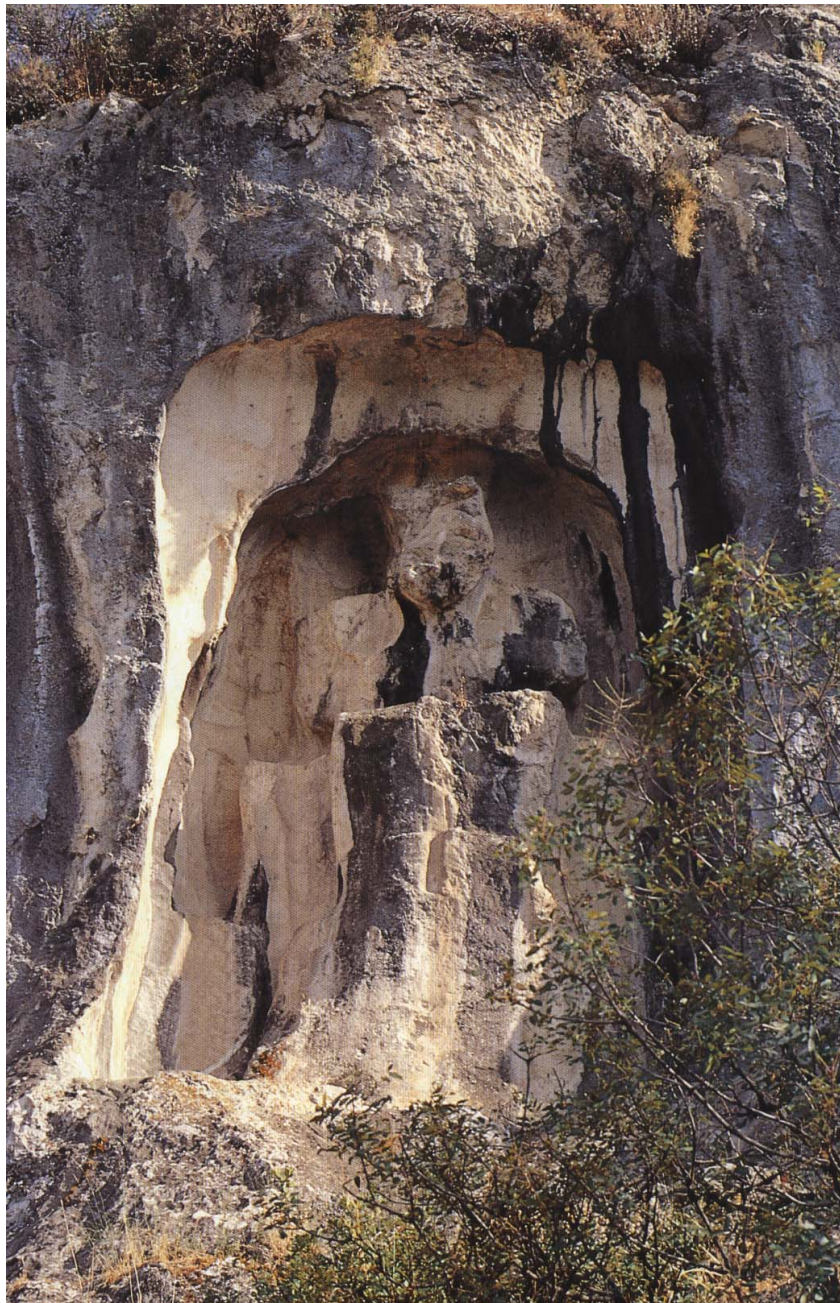
- Modern City
- ANCIENT SITE (LBA NAME)
- Lydian Kingdom (Iron Age)
- LBA REGION





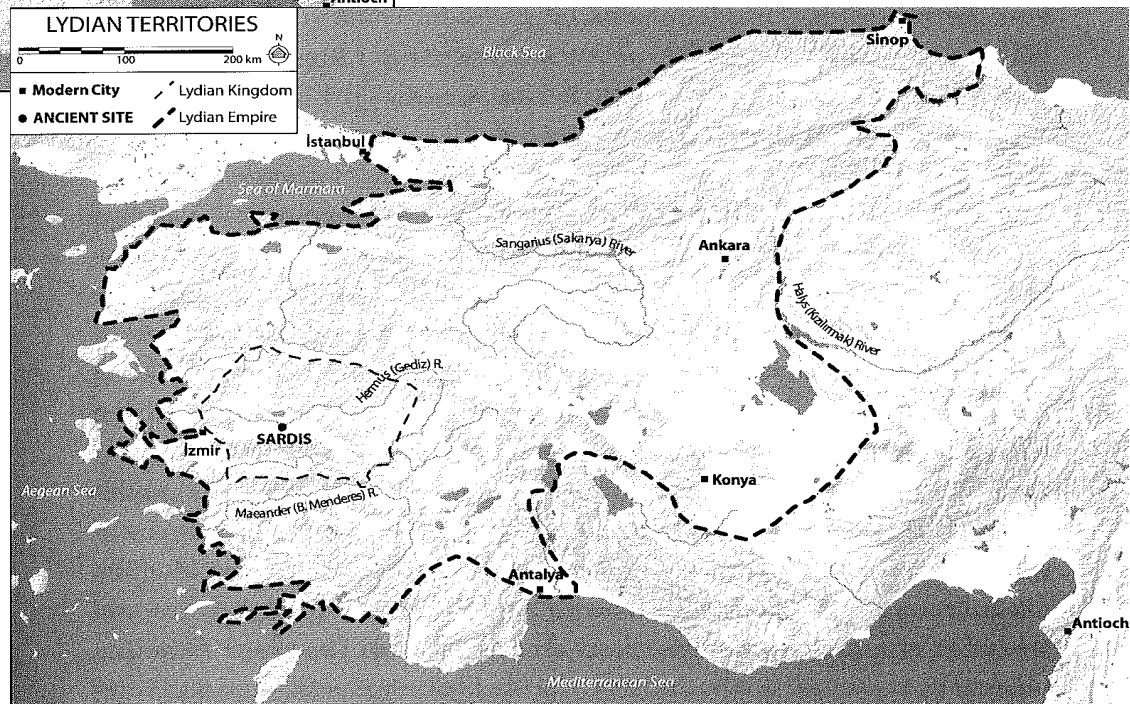
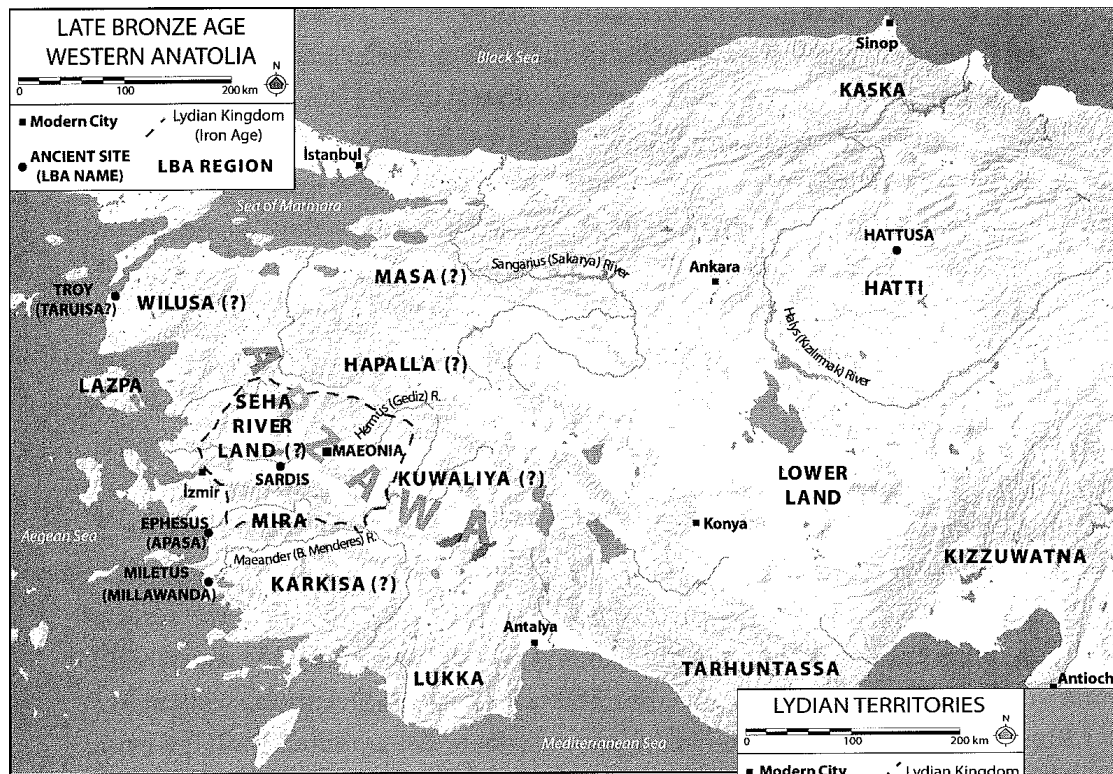
Relief with Luwian inscription at the pass of Karabel, probably marking the northern border of the Mira kingdom.





Relief at the
Sipylus
Mountains with
Luwian
inscription





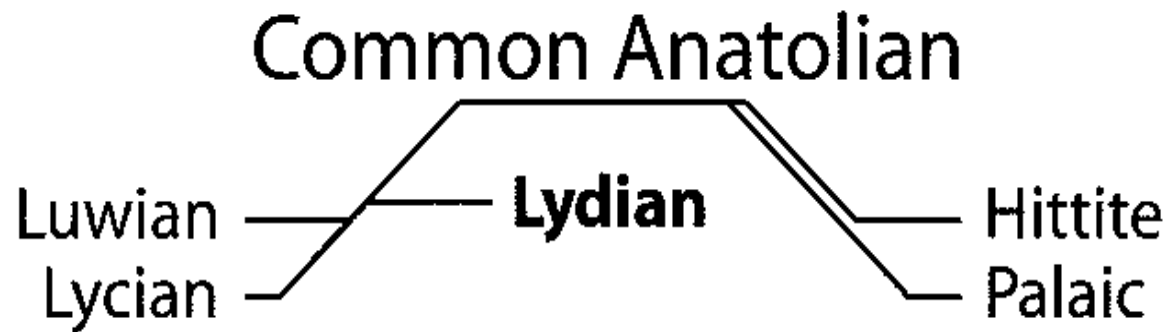


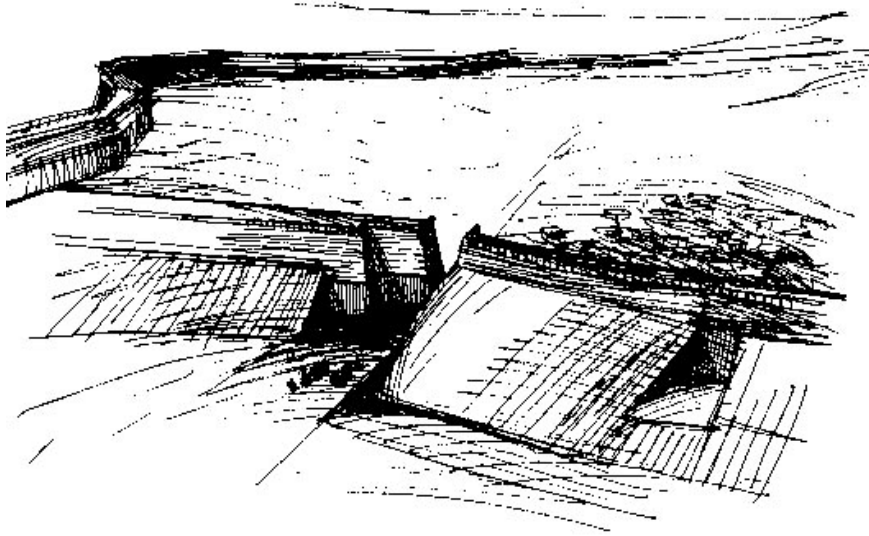
Figure 2.2. Diagram showing simplified relationships between Lydian and other Anatolian dialects (C. H. Roosevelt).



Dates (BCE)	PERIOD	Local rulers /Events	
300	HELLENISTIC	Capture of Sardis by Alexander the Great (334)	
400	LATE LYDIAN/ ACHAEMENID	Autophradates, Rhosakes, Spithridates	"Great Satraps' Revolt"
500		Tissaphernes, Cyrus the Younger Artaphernes II, Pissothnes Oroetes, Bagaeus, Artaphernes I	Cyrus' Revolt Ionian Revolt Lydian Revolt
600	MIDDLE LYDIAN	Alyattes (ca. 610), Croesus (ca. 560)	Lydian-Median Interactions
700		Gyges (ca. 680), Ardys, Sadyattes <u>Mermnad Kings</u>	Assyrian Interactions Cimmerian Incursions
800	EARLY LYDIAN/ EARLY IRON AGE	PSEUDO-HISTORICAL	Agron to Candaules (twenty-two generations) <u>Heraclid Kings</u>
900			
1000			
1100			
1200			<u>Atyad Kings</u> : Atys, Lydus, and others
1300	LATE BRONZE AGE	Descendant of Muwawalwi	Tudhaliya
1400		Masturi, Tarhunaradu	IV-Suppiluliuma II
1500		Manapatarrhunda	Muwatalli II, Hatusili III
1600		Muwawali <u>Seha River Land Kings</u>	Mursili II Suppiluliuma I <u>Hittite Kings</u>

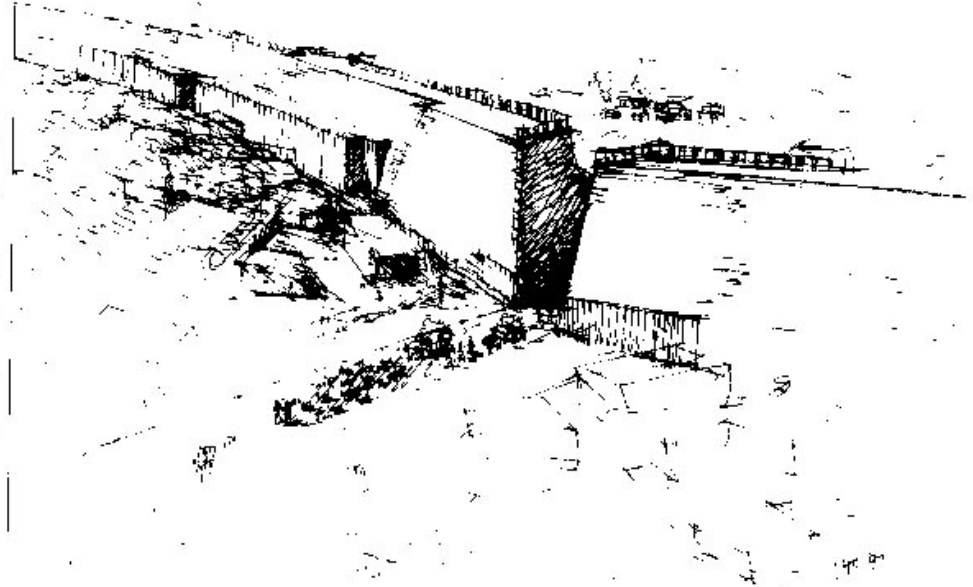


Sardis: the temple of Artemis,
Hellenistic and Roman age.



Res. 25. MÖ 6. yüzyılın ortalarında Lidya Surlarını canlandırma denemesi, şehrin içine doğudan bakmakta (P.T. Stinson)

Fig.25 Reconstruction of the Lydian Fortification in the mid-sixth century BC, looking east into the city (P.T. Stinson)



Res. 26. MÖ 6. yüzyılın ortalarında Lidya Surlarını canlandırma denemesi, şehrin dışına batıdan bakmakta (P.T. Stinson)

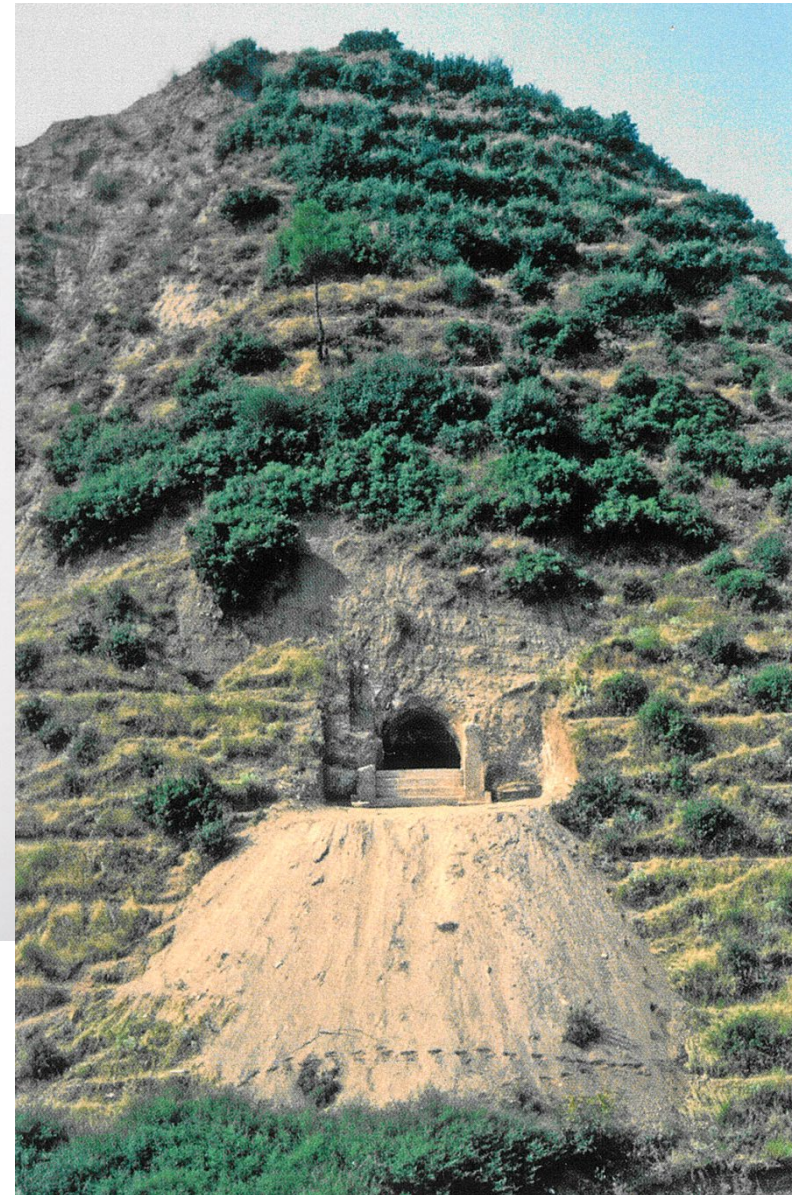
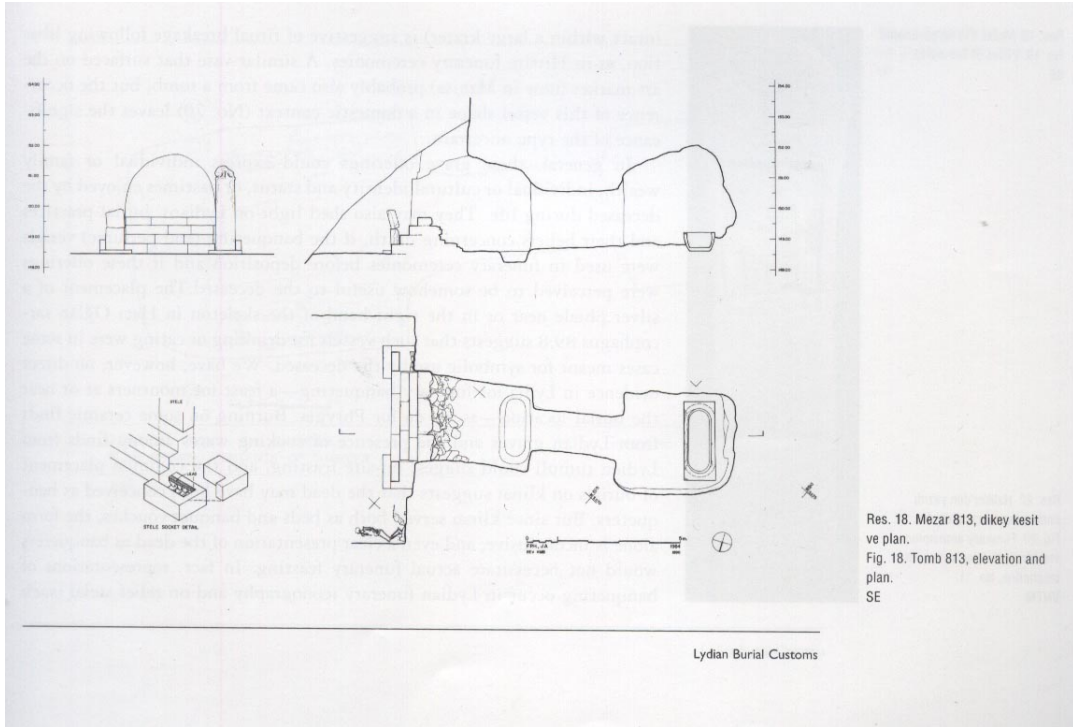
Fig.26 Reconstruction of the Lydian Fortification in the mid-sixth century BC, looking west out of the city (P.T. Stinson)

Lydian coins

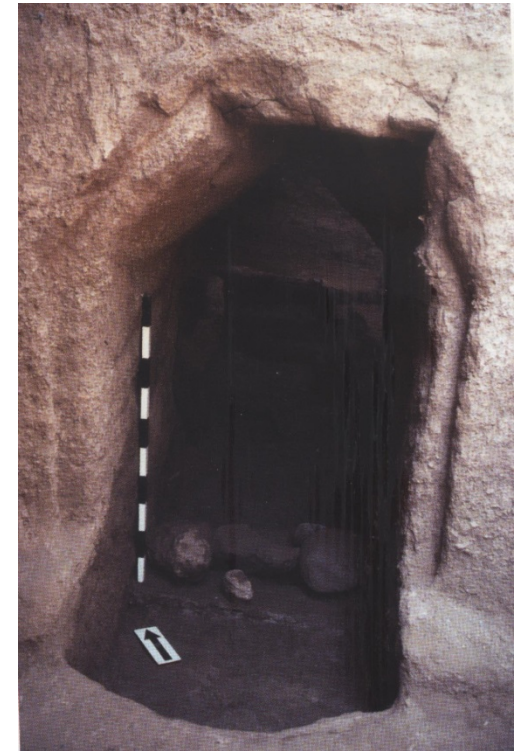




Croisos on the pyre



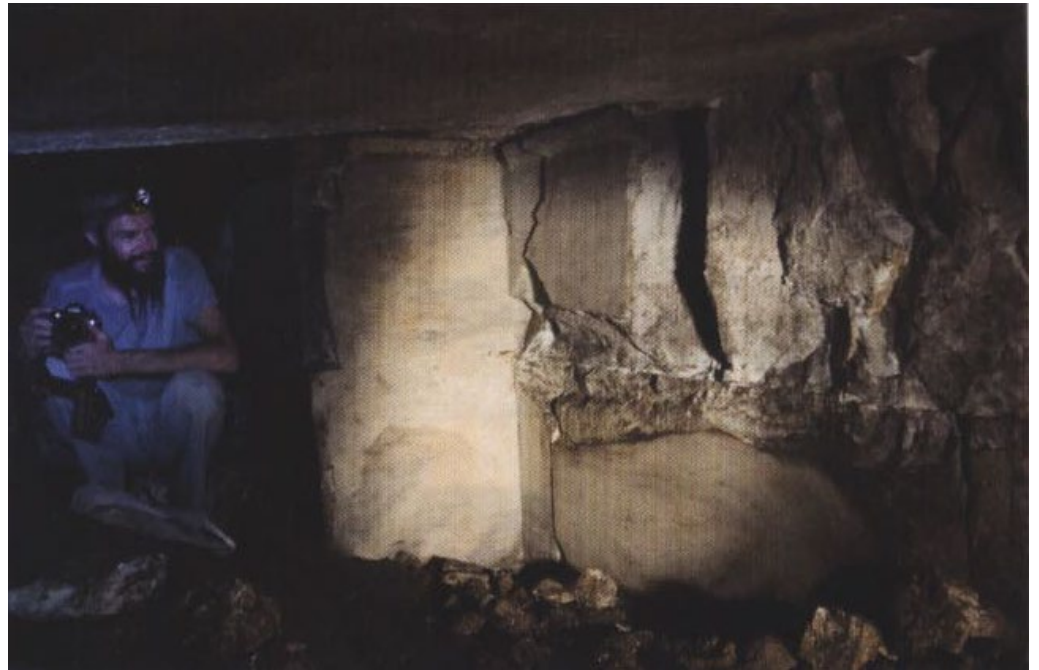
Lydian rock-cut tomb





The Tomb of Alyattes

<https://sardisexpedition.org/en/essays/about-bin-tepe>



The Tomb of Alyattes

<https://sardisexpedition.org/en/essays/about-bin-tepe>

Types of stone-built chambers in Lydian tumuli

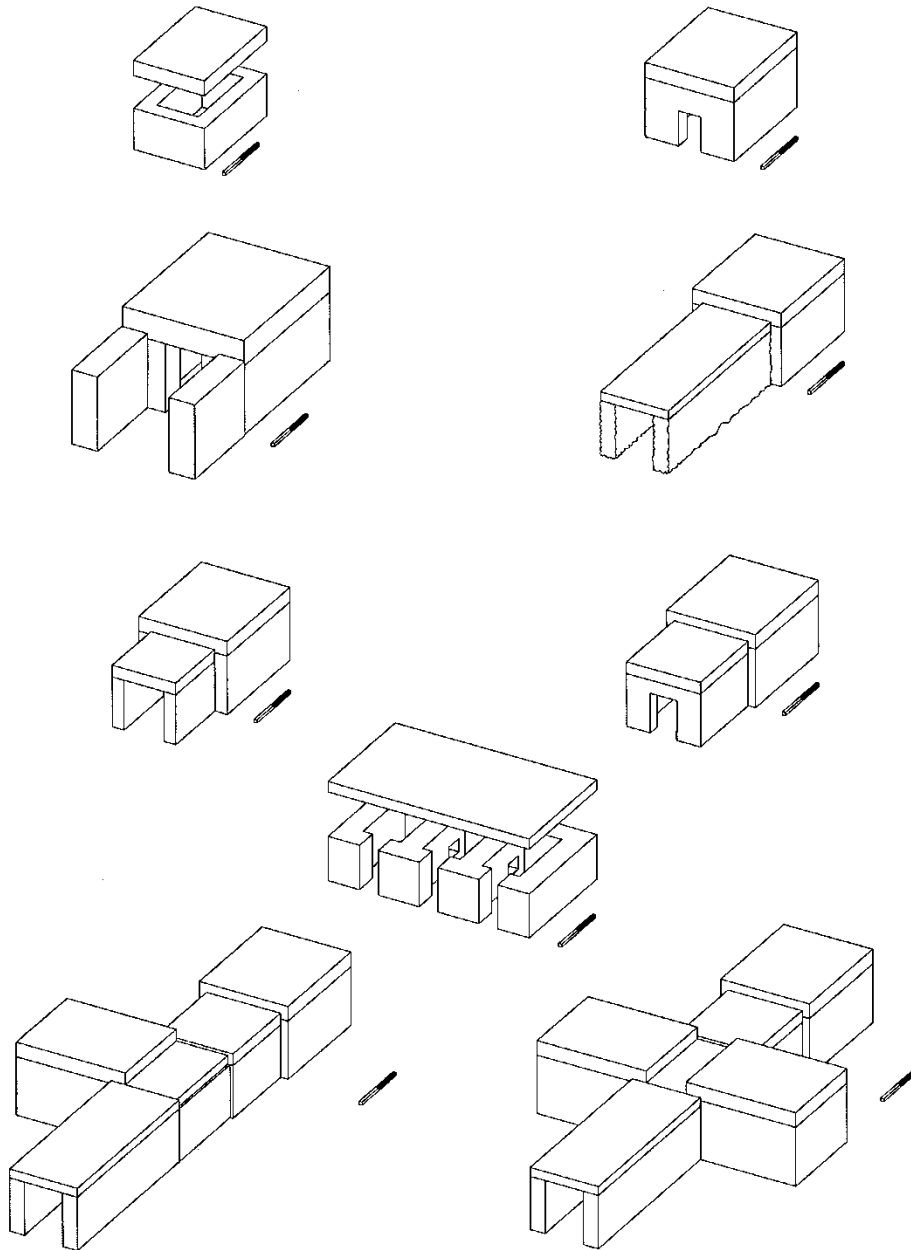


Figure 6.15. Attested chamber-tomb complexes associated with tumuli in Lydia (C. H. Roosevelt).

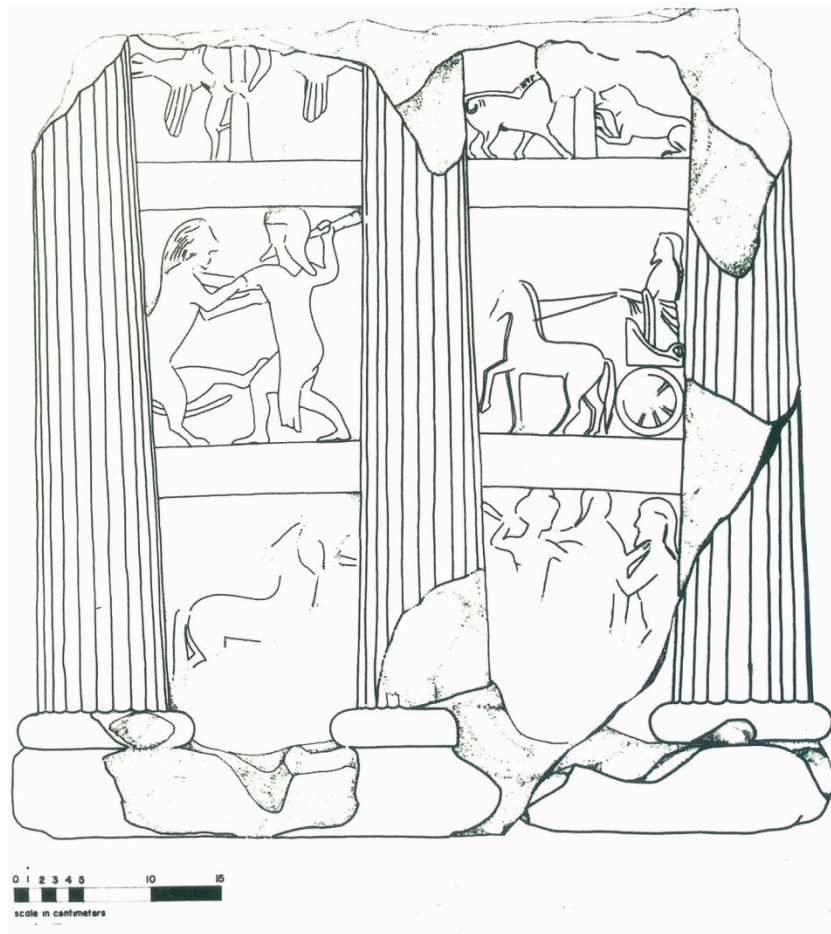


Lydian
stone-built
tomb at Lale
Tepe





Marble model of a temple of Kybele from Sardis,
found reused in the synagogue.



Drawing of one side of the model



Alter of Kybele in Sardis



The temple of Artemis in Sardis

Съдове от т.нар.
Лидийско
съкровище

